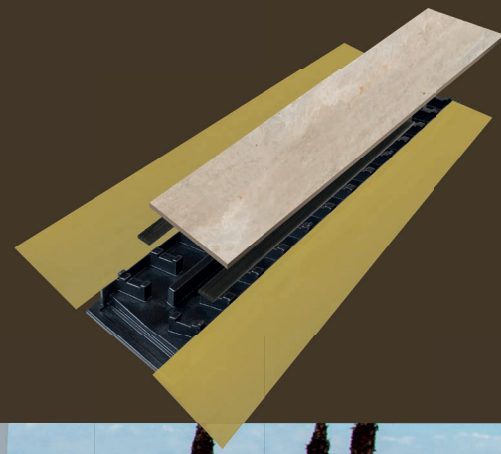


# SYSTEM **WALK LEVEL**

prefabricated tileable drain channel

TERRACES / SWIMMING POOLS / SPORTS AND WELLNESS CENTERS



responsible  
waterproofing

---

revestech®

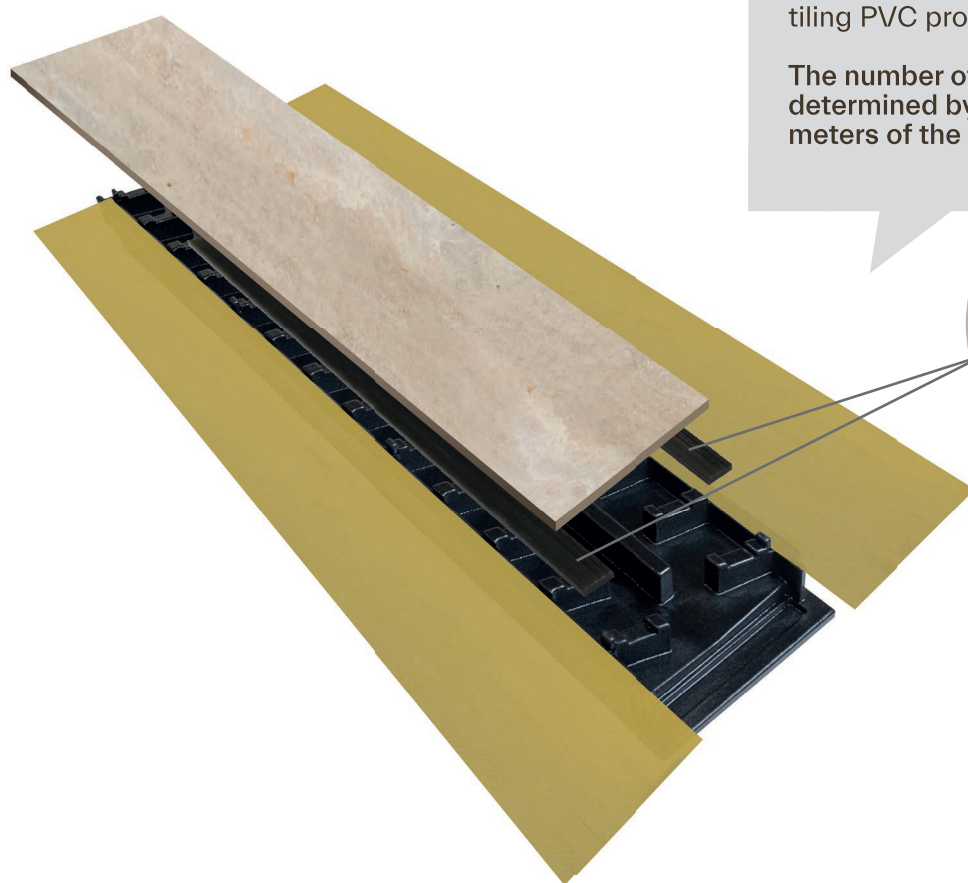
A prefabricated tileable drainage channel system, 100% watertight that allows the evacuation of water surface. Suitable for tileable surfaces in internal and external.

#### COMPONENTS

Channel provided with two eaves of 20 cm wide with **DRY50** waterproofing membrane heat-sealed.

\_ 1 m x 29 mm ceramic piece  
tiling PVC profiles.

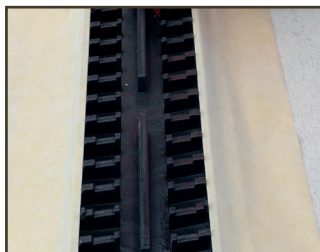
The number of profiles will be determined by the total linear meters of the project.



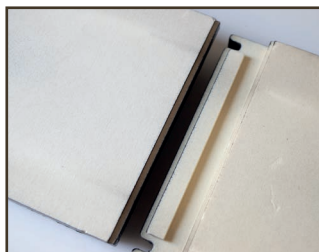
**FAST  
EVACUATION AND  
HIGH QUALITY  
FINISHES**

An efficient constructive solution with an elegant final aesthetic. Easy to install and maintenance, providing security and guarantee to the **DRY** system.





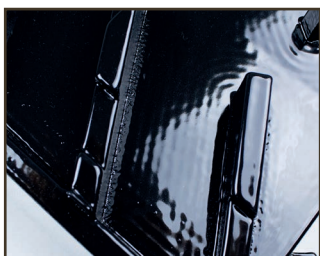
MEETING WITH THE  
MEMBRANE YAS IT  
PROVIDES WITH TWO EAVES  
OF **DRY50** WATERPROOFING  
MEMBRANE HEAT-SEALED



EASE OF ASSEMBLY  
PERFECT AND SAFE JOINT  
BETWEEN ELEMENTS.

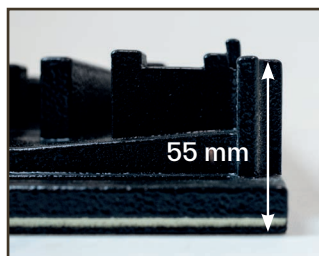


TOTAL TIGHTNESS  
OF THE JOINTS  
BY SEALING WITH  
**REVESTECH FLEX**  
ADHESIVE



HIGH PERFORMANCE  
POLYURETHANE FINISH

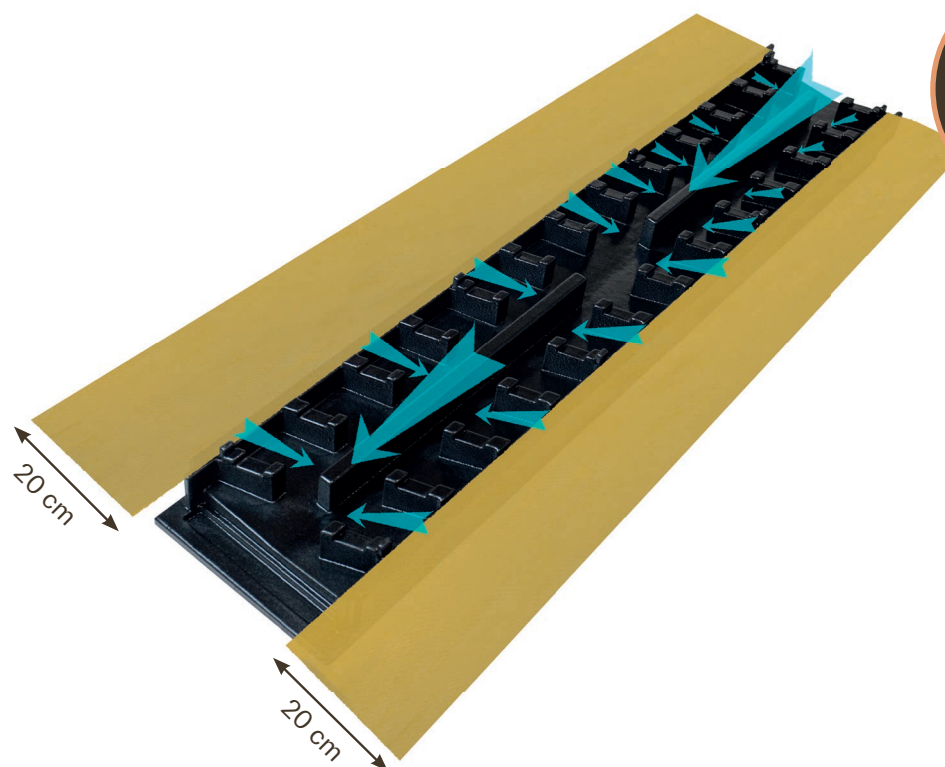
CHANNELS WITH  
SPECIAL COATING FOR  
THEIR PROTECTION AGAINST  
UV RAYS



MINIMUM THICKNESS



INTERIOR V-SLOPES THAT  
ALLOW A QUICK AND EASY  
EVACUATION



REVESTECH  
QUALITY  
FINISH  
GUARANTEE

# WALK LEVEL

The system consists with a series of elements that once connected form a drainage channel, ready to be covered with flooring. All the pieces of the **WALK LEVEL** system are available for two widths of ceramic tile: 15 cm and 30 cm. It includes PVC profiles to hold the ceramic pieces, the quantity of which will be determined by the total linear meters of the project.

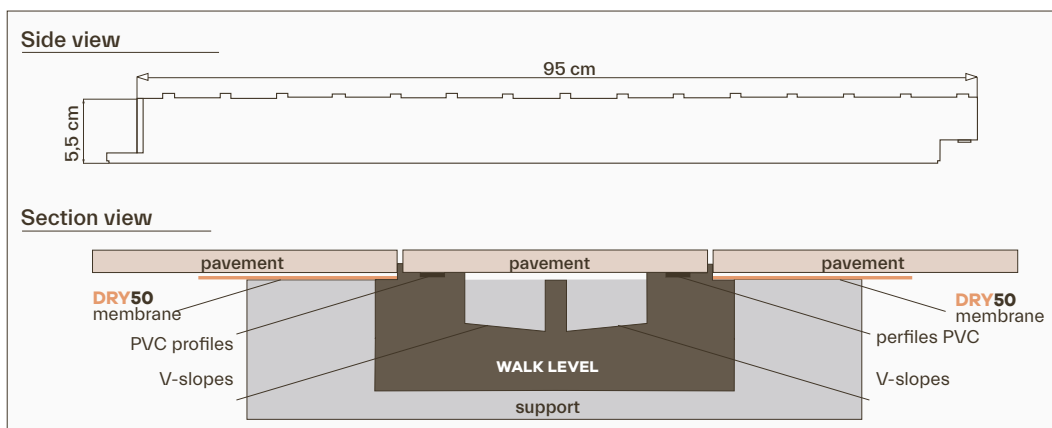
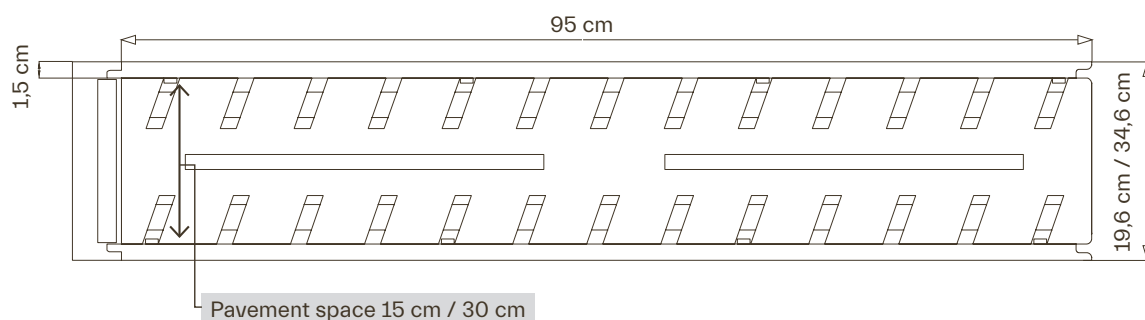
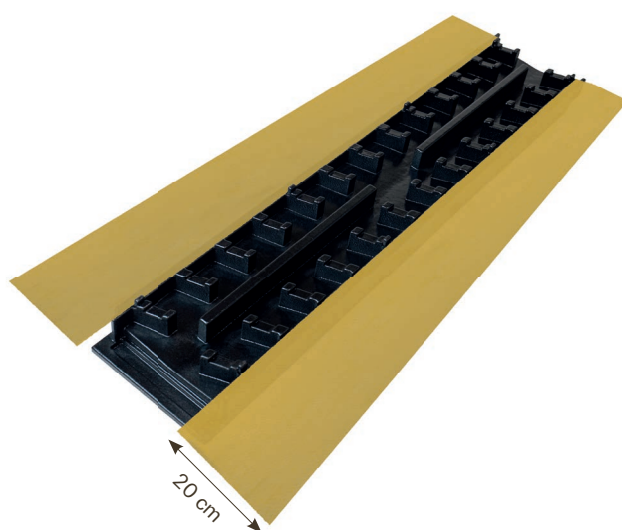
**WALK LEVEL** channel 15 cm

Ref. 544019680

**WALK LEVEL** channel 30 cm

Ref. 544019826

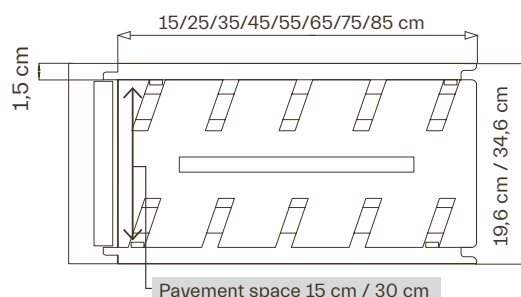
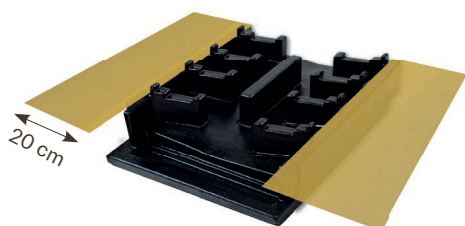
95 cm length channel with internal V slope. Includes: **DRY50** waterproofing membrane heat-sealed on the eaves.



## WALK LEVEL adjustment

Adjusting piece of different length measurements with internal V slope.

Includes: **DRY50** waterproofing membrane heat-sealed on the eaves. To complete the measure required by the installation, these parts will be available in the following sizes: 15, 25, 35, 45, 55, 65, 75 and 85 cm.



	Reference
WALK LEVEL adjustment 85 x 15 cm	544019697
WALK LEVEL adjustment 85 x 30 cm	544019833
WALK LEVEL adjustment 75 x 15 cm	544019703
WALK LEVEL adjustment 75 x 30 cm	544019840
WALK LEVEL adjustment 65 x 15 cm	544019710
WALK LEVEL adjustment 65 x 30 cm	544019857
WALK LEVEL adjustment 55 x 15 cm	544019727
WALK LEVEL adjustment 55 x 30 cm	544019864
WALK LEVEL adjustment 45 x 15 cm	544019734
WALK LEVEL adjustment 45 x 30 cm	544019871
WALK LEVEL adjustment 35 x 15 cm	544019741
WALK LEVEL adjustment 35 x 30 cm	544019888
WALK LEVEL adjustment 25 x 15 cm	544019758
WALK LEVEL adjustment 25 X 30 cm	544019895
WALK LEVEL adjustment 15 x 15 cm	544019765
WALK LEVEL adjustment 15 x 30 cm	544019901

## WALK LEVEL drain 15 cm

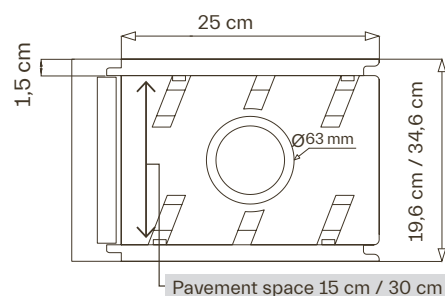
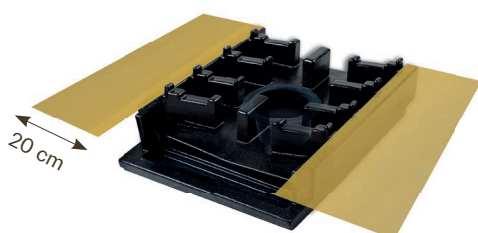
Ref. 544019772

## WALK LEVEL drain 30 cm

Ref. 544019918

Drain part with internal V slope, discharge capacity of 1.38 l/s and outlet Ø 63 mm.

Includes: **DRY50** waterproofing membrane heat-sealed on the eaves, and a special drain designed for this system that supports high pressures and is resistant to the products commonly used in swimming pools.



# WALK LEVEL

**WALK LEVEL** lateral drain 15 cm

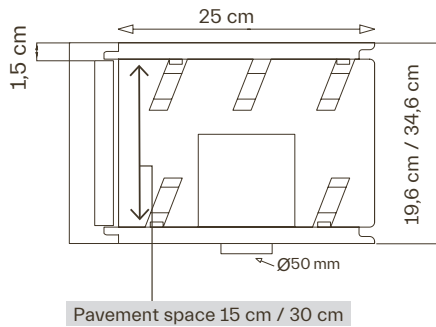
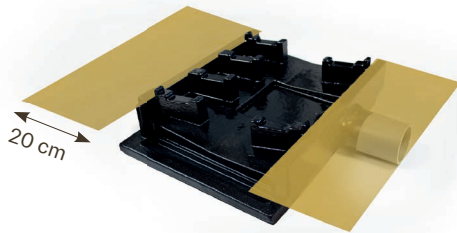
Ref. 596350168

**WALK LEVEL** lateral drain 30 cm

Ref. 596350175

Drain part with discharge capacity of 0.68 l/s and Ø 50 mm lateral outlet.

Includes: **DRY50** waterproofing membrane heat-sealed on the eaves and a special drain designed for this system that supports high pressures and is resistant to the products commonly used in swimming pools.



**WALK LEVEL** corner 15 cm

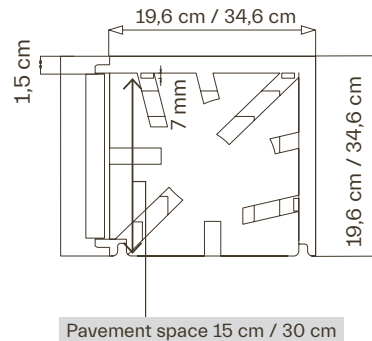
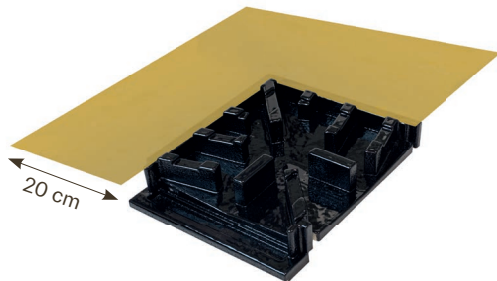
Ref. 544019789

**WALK LEVEL** corner 30 cm

Ref. 544019925

Corner part with internal V slope.

Includes: **DRY50** waterproofing membrane heat-sealed on the eaves.



**WALK LEVEL** outside corner 15 cm

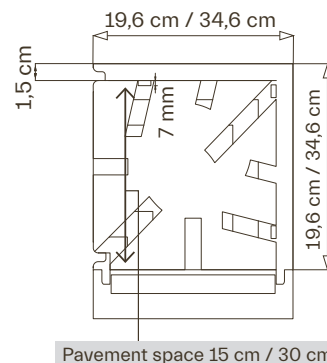
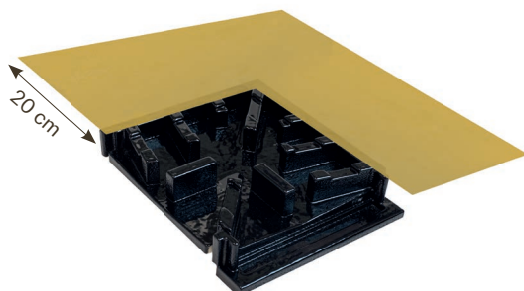
Ref. 596350441

**WALK LEVEL** outside corner 30 cm

Ref. 596350458

Corner part with internal V slope.

Includes: **DRY50** waterproofing membrane heat-sealed on the eaves.



**WALK LEVEL** side A 15 cm

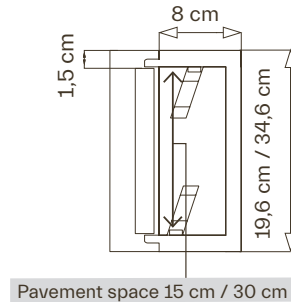
Ref. 544019802

**WALK LEVEL** side A 30 cm

Ref. 544019949

Channel start terminal.

Includes: **DRY50** waterproofing membrane heat-sealed on the eaves.



**WALK LEVEL** side B 15 cm

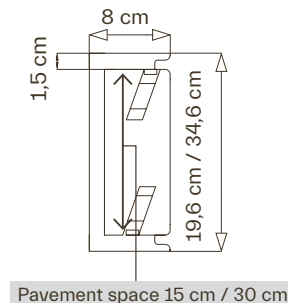
Ref. 544019819

**WALK LEVEL** side B 30 cm

Ref. 544019956

Channel closing terminal.

Includes: **DRY50** waterproofing membrane heat-sealed on the eaves.



**WALK LEVEL** corner drain 15 cm

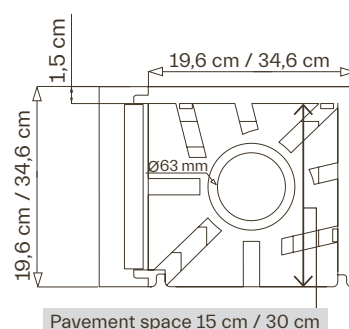
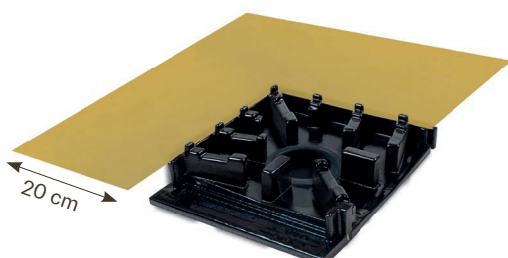
Ref. 544019796

**WALK LEVEL** corner drain 30 cm

Ref. 544019932

Corner drain part with discharge capacity 1.38 l/s and Ø 63 mm outlet.

Includes: **DRY50** waterproofing membrane heat-sealed on the eaves and a special drain designed for this system that supports high pressures and is resistant to the products commonly used in swimming pools.



# WALK LEVEL

## ADHESIVES



### SEALPLUS 6

6 kg. Pot  
Ref. 544010670

Adhesive for joining overlaps between the eaves of the **WALK LEVEL** pieces and the waterproofing membrane of the rest of the support.



Practical yield: 25 a 30 m.



### SEALPLUS 0600

600 ml. Blister  
Ref. 544012858

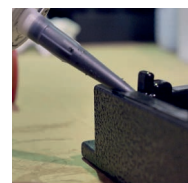
Practical yield: de 5,5 a 6 m.



### REVESTTECHFLEX

310 ml. Cartridge  
Ref. 544015323

Adhesive for sealing joints between **WALK LEVEL** pieces and sealed the ceramic to PVC profiles.

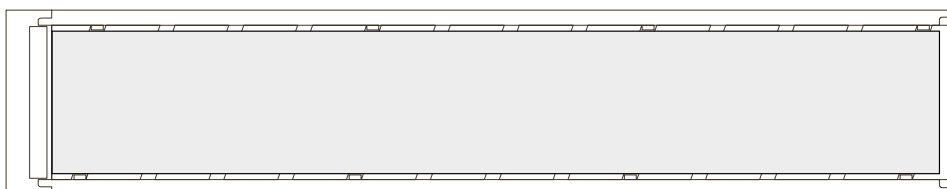
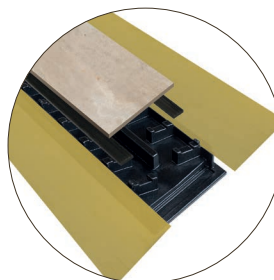


Practical yield: 8 m of channel.

## pavement position

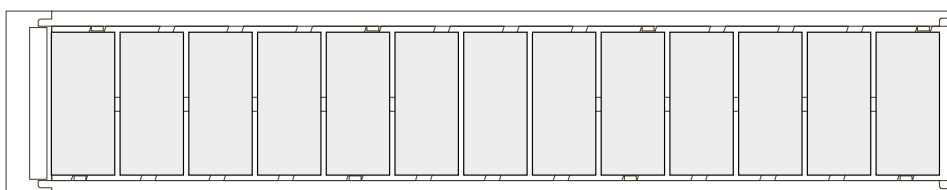
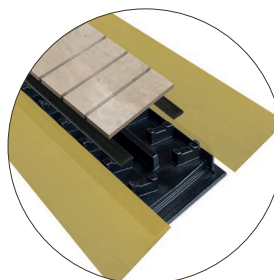
### Unique piece

The width of tiles must be the same as the interior width of the **WALK LEVEL** channel (15 cm or 30 cm).



### Several pieces

The length of tiles must be equal to the interior width of the **WALK LEVEL** channel (15 cm or 30 cm).

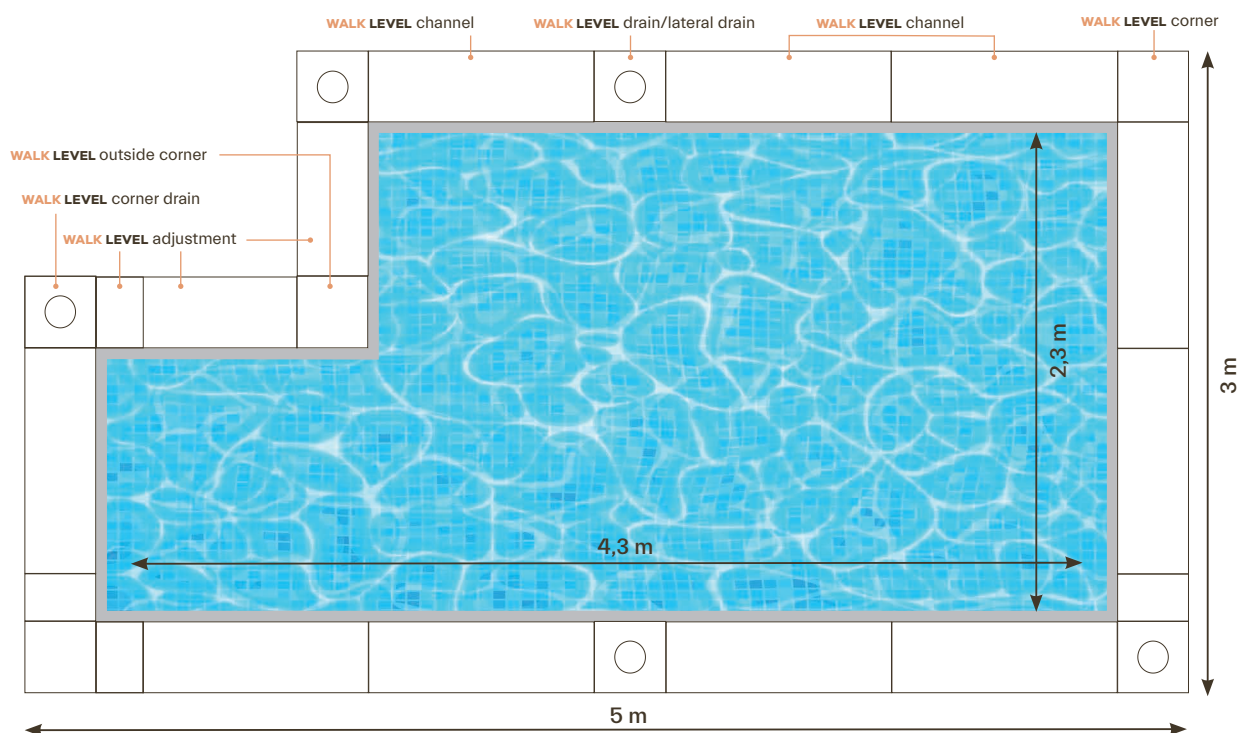


The flooring to be laid must have the following characteristics:

- Minimum breaking force: 1100 N (test according to ISO 10545-4).
- Minimum thickness: 7.5 mm.



2,3 m x 4,3 m pool



6,11 m x 4 m terrace

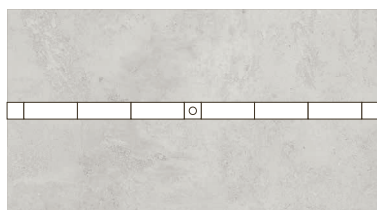
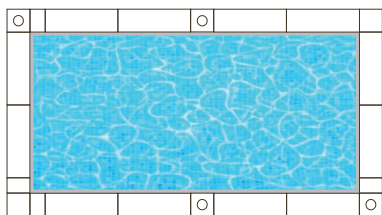


# WALK LEVEL

---

## PHASE 1 - LAYOUT AND COMPONENT CALCULATION:

---



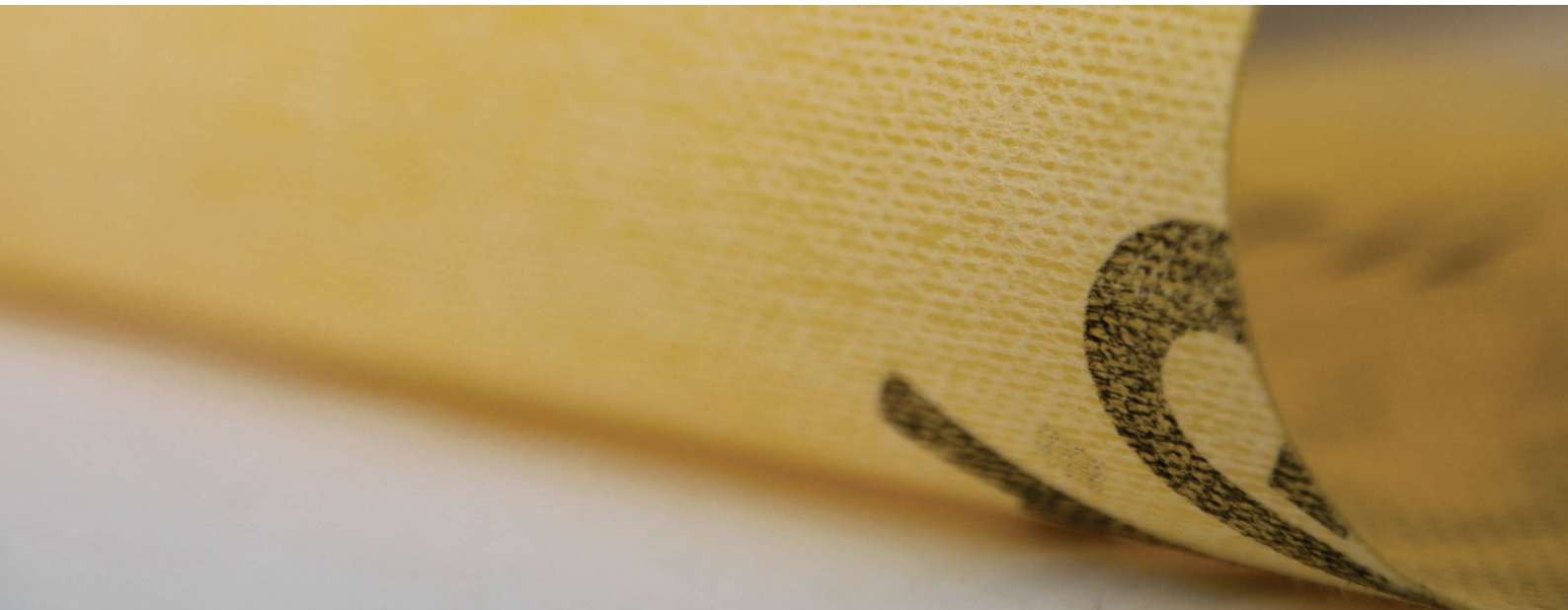
Obtain a dimensioned plan of the terrace or swimming pool and send it to **REVESTECH** with the measurements of the tiles model chosen. The maximum recommended distance between drains is 4 m. Consult with the **REVESTECH** technical department.

## PHASE 2 - SUPPORT PREPARATION:

---



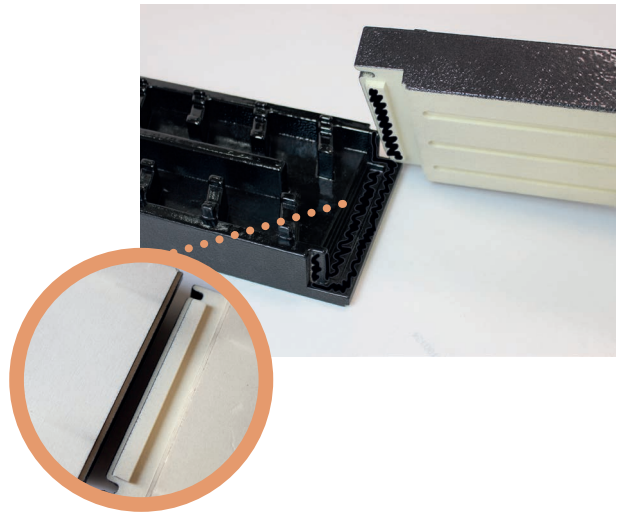
Make a reduction in the support along the entire channel of 6/7 cm deep, which allows us to level the height of the channels and the width up to 21/22 cm or 36/37 cm. Check that the support slopes are well done towards the **WALK LEVEL** system.



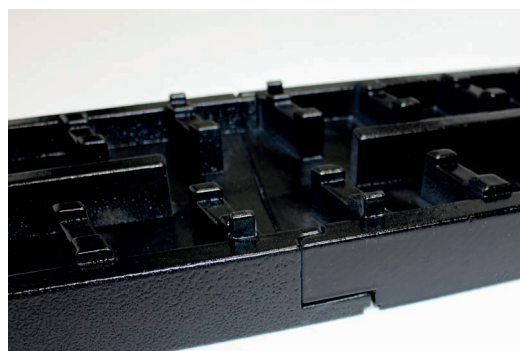
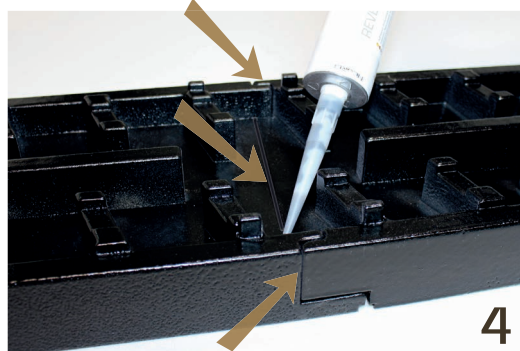
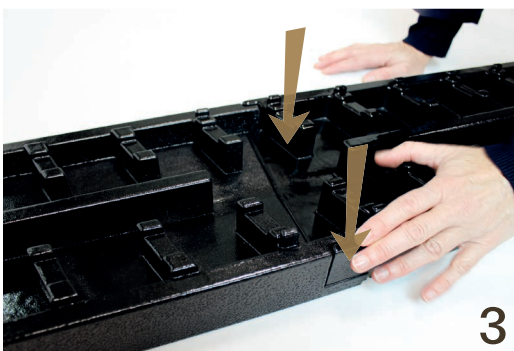
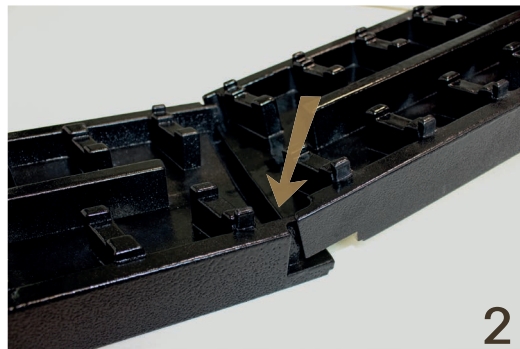
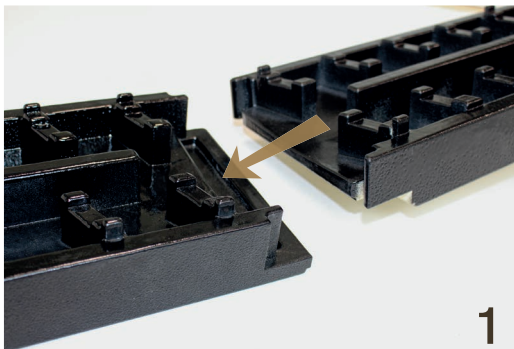


## PHASE 3 - ASSEMBLY OF THE CHANNEL PIECES:

Connect the different pieces of the channel by means of the male part and female part of the pieces sealing each other using **REVESTechFLEX** adhesive. It is recommended to install it piece by piece, always connecting the male on the female. Every time the joined pieces are installed on the support, seal the union between the pieces with **REVESTechFLEX** (see image 4).



## JOINING SYSTEM BETWEEN PIECES:



# WALK LEVEL

## PHASE 4 - CONNECTION WITH THE DRAINAGE SYSTEM:



The drains (horizontal or vertical outlet) must be connected to the drain pipe, installing the **WALK LEVEL DRAIN** or **WALK LEVEL CORNER DRAIN** pieces using C2 S1/S2 tile adhesive. Check that the joint between pipes is perfectly sealed.



## PHASE 5 - CHANNEL INSTALLATION:



Apply a layer of C2 S1/S2 tile adhesive on the support and place each piece of the system composition. Fill in all the gaps between the channel and the rest of the flooring and check that the channel is totally leveling with the rest of the surface.





## PHASE 6 - WATERPROOFING THE WALK LEVEL CHANNEL:

---



Unfold the **DRY50** waterproofing membrane eaves and sealed them to the support with a C2 S1/S2 tile adhesive. Overlappings between walk level channel eaves must be made using **SEALPLUS** adhesive in such a way that the entire length of the channel is waterproofed on both sides.

## PHASE 7 - SUPPORT WATERPROOFING :

---

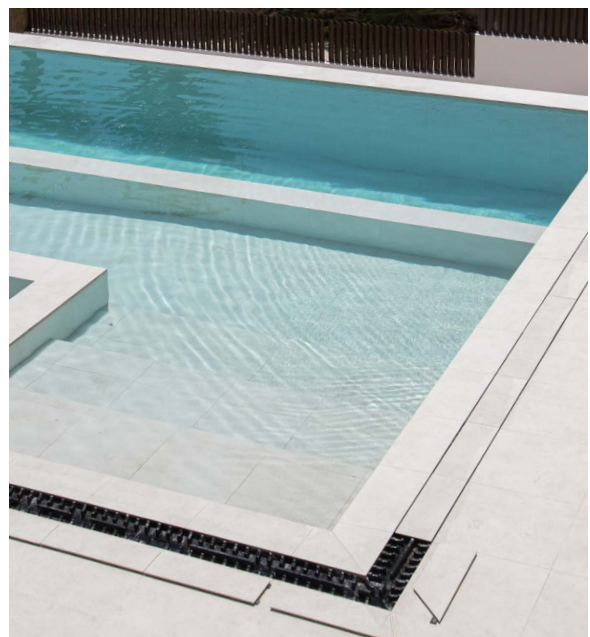
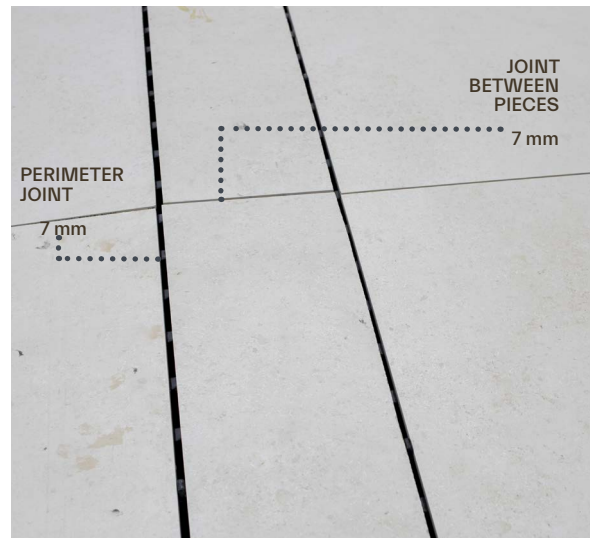


Proceed to waterproof the rest of the support, always overlapping onto the **DRY50** waterproofing membrane eaves by a minimum of 10 cm. Overlaps between membranes must be sealed using **SEALPLUS** adhesive.

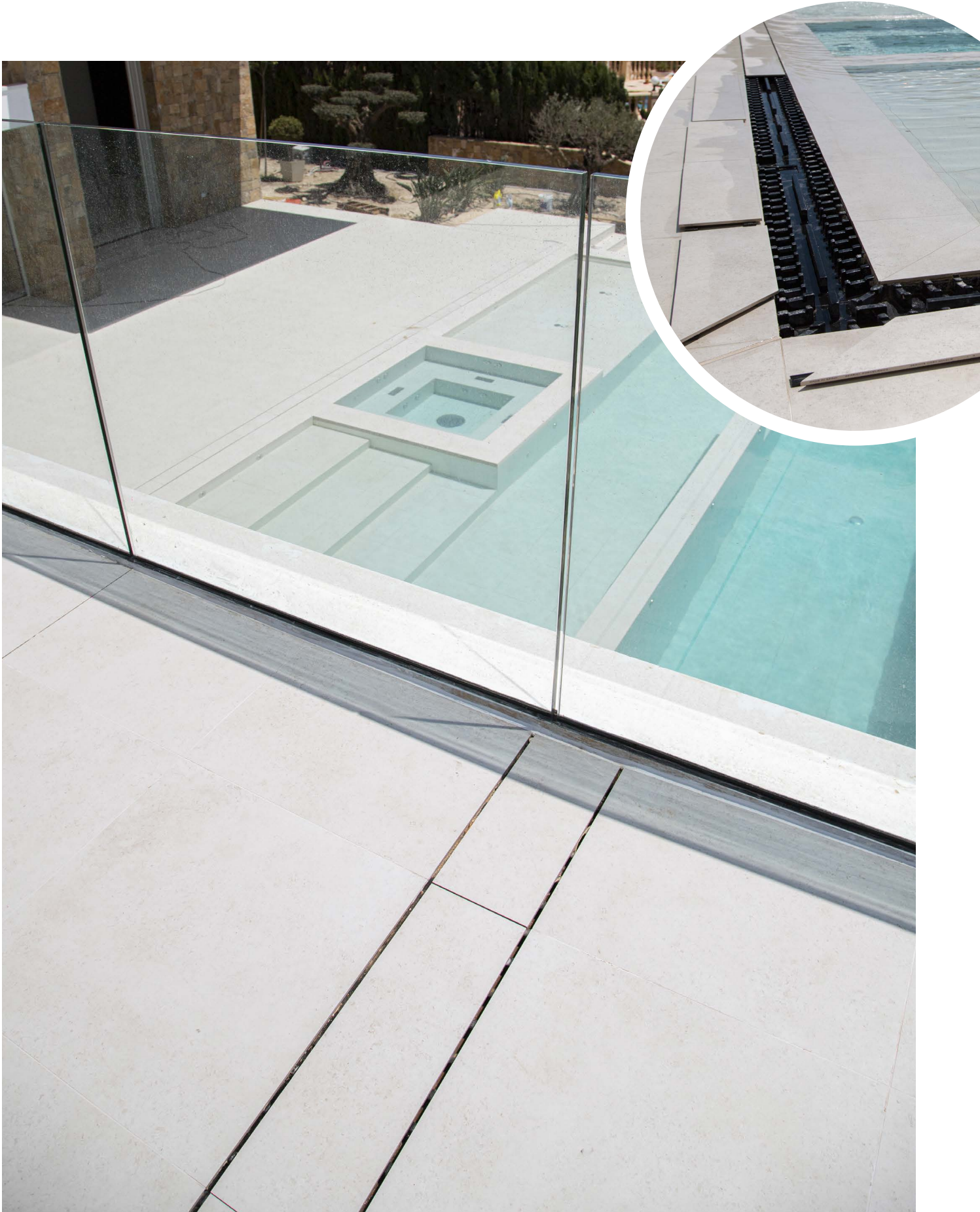
# WALK LEVEL

## PHASE 8 - COATING THE SUPPORT AND THE INTERIOR OF THE CHANNEL:

Proceed with the placement of the tiles that goes around the channel, taking into account that the pavement must be placed face to the stops that protrude on the sides pieces, thus adjusting the tile pieces to the edges of the channel. For the interior tiling of the channel, cut the pieces of the flooring according to the design and size of the channel width. Seal them using **REVESTECHFLEX** adhesive to the PVC supports in such a way that they fit perfectly in the two grooves provided for this purpose in each piece of **WALK LEVEL**.











WARRANTY  
10 years

C/ La Rioja,4. 03006 Alicante. 965 10 65 69  
[revestech.com](http://revestech.com)

**revestech®**