

# LEVEL SHOWER TRAY

## TECHNICAL DATA SHEET

revestech®



1. Shower tray
2. Drain with water trap
3. waterproof perimeter band
4. Trim piece (optional installation)
5. Tiling profiles
6. Revestechflex adhesive
7. Protector in installation
8. Cleaning key

### Description

Complete kit for building a flat shower tray, 100% waterproof, to inset into the floor, suitable for coating the entire shower with the same tiling without slopes or steps, with drainage of water via the tiles joints.

**Versatility:** it enables the installation of various ceramic formats whenever we cover at least one of the measures of the shower floor, either width or length (as appropriate). Preferably porcelain coating.

**Cleaning:** level shower tray, apart from having an antibacterial and antifungal sanitary treatment, it has a system for easy lifting of the pavement, which allows access to the inside of the shower tray and the drain trap.

**Maintenance:** It has a profile system that allows the floor to be easily raised, allowing access into the shower floor and to the water trap. For the cleaning of the chosen tiles, follow the manufacturer's instructions.

**Impact noise insulation:** the 4 mm perimeter seal isolates the shower floor at all its joints, attenuating the transmission of impact noise.

### Advantages

- Invisible.
- Waterproof.
- Completely flat.
- Surface with antibacterial sanitary treatment.
- Sound-absorbing material.

**\_Installation height:** 86 mm

**\_outlet:** horizontal Ø40h

**\_Evacuation:** 0,58 liters/second UNE-EN 274

**\_composition:** high-performance polyurethane

**ATTENTION:** The ceramic used to place on the Level tray must have the essential characteristics adequate to meet the requirements relating to CE certification in the category of shower trays.

The pavement to be installed must have the following characteristics:

**THE LENGTH OF THE CERAMIC TILE HAS TO BE AT LEAST EQUAL TO THE NARROWEST PART OF THE LEVEL SHOWER TRAY. THE TILE CANNOT BE SMALLER IN ANY CASE:**

- Dimensions: 3.8cm less than the edges of the plate, in the direction in which you want to place it.
- Minimum breaking strength: 1100N ((test according to ISO 10545-4).
- Minimum thickness: 7.5 mm.
- The chosen ceramic should preferably be a porcelain floor tile.



Presentation		
Cleaning capacity	Clase 1	EN 14527:2016
Durability	Clase 1	EN 14527:2016



REVESTECH  
C/ La Rioja, 4 - 03006  
ALICANTE - ESPAÑA  
18  
005-DdP-2018/11/12  
EN 14527:2016  
PLATO LEVEL  
Uso doméstico,  
para la higiene pessoal

## TECHNICAL DATA

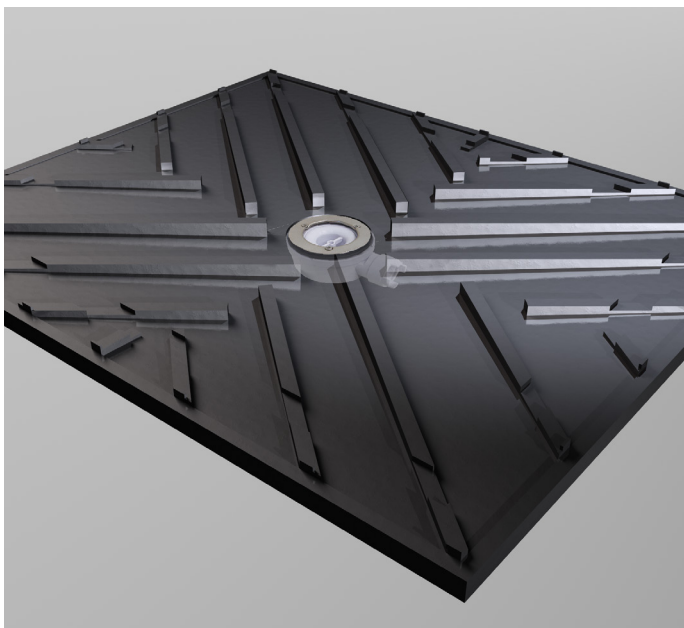
LEVEL drain	Method	Unit	Valor
Outlet		mm	Horizontal 40
Outlet diameter		mm	40
Flow rate	Flow according to Standard UNE-EN 274	l/s	0,58
Composition	Polypropylene		

LEVEL shower tray	Standard	Unit	Valor
FILLING MATERIAL: Fire classification	EN 13501-1		E
SHOWER FLOOR TILING: Fire flammability testing	DIN 4102-98 part 1		B2
Compressive strength WITHOUT tiling	EN 826	kPa	2000
E-Modulus	EN 826	kPa	55000
Tensile strength	EN 1607	kPa	1500
E-Modulus	EN 1607	kPa	40000
Transverse tensile strength	EN 12089	kPa	2500
Shear modulus	EN 12090	kPa	600
Thermal conductivity at 10°C	EN 12667	W/mK	0,030*
Usage limit temperatures		°C	-70 +130

\*The thermal conductivity values have been defined with Standard EN 12667 over 6 weeks at an average temperature of 10°C.

Test	Standard	Results
WATER VAPOUR TRANSMISSION (Determination of properties)	UNE-EN 1931:2001	q = 2496
WATERTIGHTNESS	EOTA TR003	Watertight
RESISTANCE TO MECHANICAL DAMAGE Resistance to dynamic punching shear	EOTA TR 006	No breakage
RESISTANCE TO MECHANICAL DAMAGE (perforation) Resistance to static punching shear	EOTA TR 007	No breakage
RESISTANCE TO FATIGUE	EOTA TR 008	No breakage
RESISTANCE TO THE EFFECTS OF LOW TEMPERATURES (-10°C) Dynamic punching shear	EOTA TR 006	No breakage
MECHANICAL STRENGTH Resistance to heat ageing (200 days at 70°C) - (dynamic punching shear)	EOTA TR 011	No breakage
RESISTANCE TO FATIGUE Resistance to heat ageing (200 days at 70°C)	EOTA TR 011 and EOTA TR 008	No breakage
RESISTANCE TO WATER AGEING Resistance to ageing (punching shear)	EOTA TR 012 and EOTA TR 004	No breakage

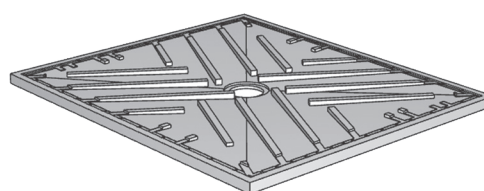
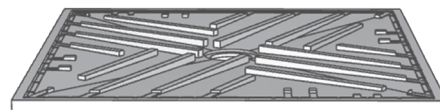
Resistance	Exposure
Methanol, alcohols	Not recommended
Petrol, diesel	No apparent damage
Toluene, Xylene	Not recommended
Water at 82°C for 14 days	No apparent damage
10% salt water, 50°C, 14 days	No apparent damage
Sulfuric, hydrochloric and phosphoric acids (< 10%)	No apparent damage
Sodium and potassium hydroxides (5%)	There is apparent damage
Acetic acid < 10%	No apparent damage
DMF, acetone, THF	Not recommended



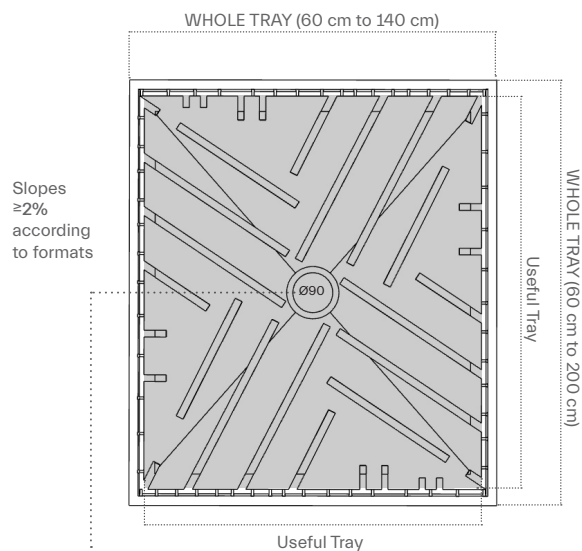
## 1. Shower former

\_Height:: 26 mm

\_Material: polyurethane



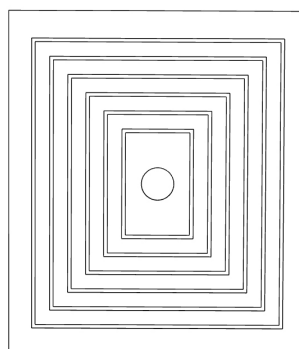
Top view



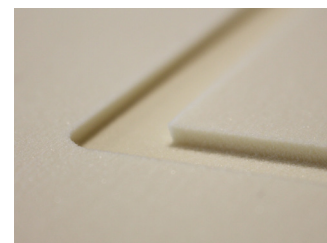
Position of the drain: CENTRAL

- WHOLE TRAY: external measurements for which the plate must be requested.
- USEFUL TRAY: 33.8 cm less than the nominal ones (1.5 eave + 0.4 cm top to ensure evacuation x 2) for each dimension. They are the ones that will really have the shower area.
- Maximum standard dimensions 140 x 200 cm.

Bottom view



It has dovetail-shaped grooves to improve the C2 S1/S2 tile adhesive anchoring.



Side view



Drawing of the section of one slope



## LEVEL drain



## 2. Drain with water trap

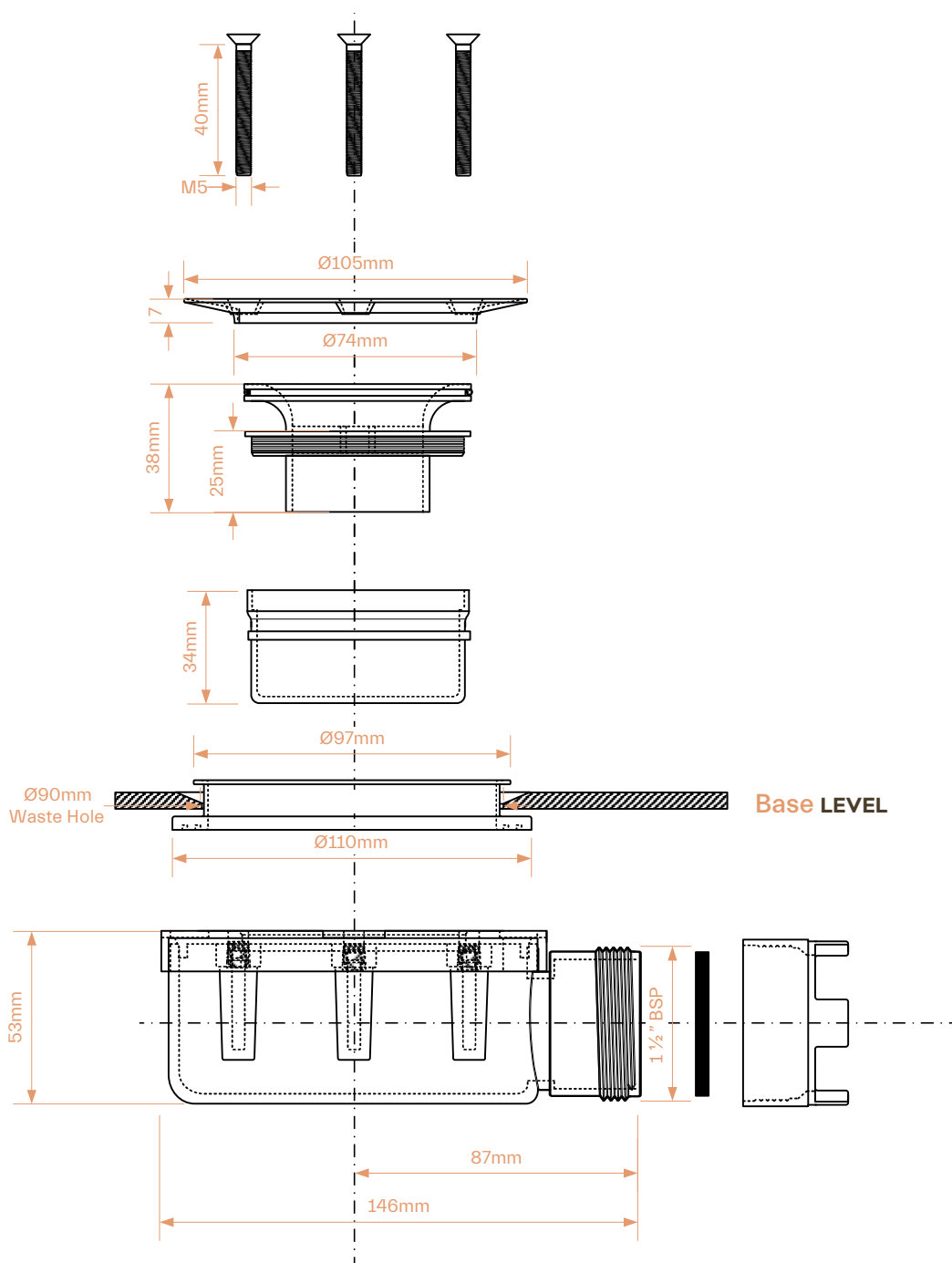
Drain with water trap (convertible into straight drain) for the invisible level shower tray with HORIZONTAL outflow (40 mm). It is placed at the centre of the tray and can be rotated through 360 °.

\_Drain installation height: 60 mm

\_Outlet: horizontal Ø40h

\_Rate flow: 0,58 litres/second UNE-EN 274

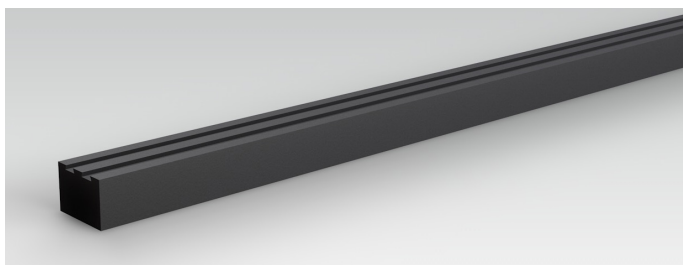
\_composition: polypropylene





## 3. Perimeter band

**DRY50** connecting band of 0.13 x 5 m/l for the treatment and waterproofing of the joints between the horizontal and vertical surfaces.



## 4. trim piece for the walls

14 mm x 14 mm compact PVC finish. On the raised side of the shower floor against the wall, it serves as a support bracket to prevent friction between the ceramic pieces. On the other side, against the wall, it acts as a decorative strip for a better finish. Its dovetail bottom favours the grip of the **REVESTTECHFLEX** adhesive. 2 units of the longest shower floor dimension are included.



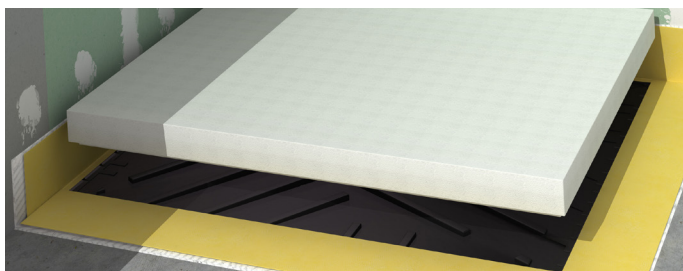
## 5. Tiling frames

PVC profiles which serve to secure the tiles to the shower floor. They prevent movement of the parts and facilitate lifting for cleaning. 2 units of the longest shower floor dimension are included.



## 6. Adhesive **REVESTTECHFLEX**

High performance modified silane-based adhesive for bonding ceramics on profiles, and the perimeter strip on the wings of the shower floor (310 ml cartridge).



## 7. Protector in installation

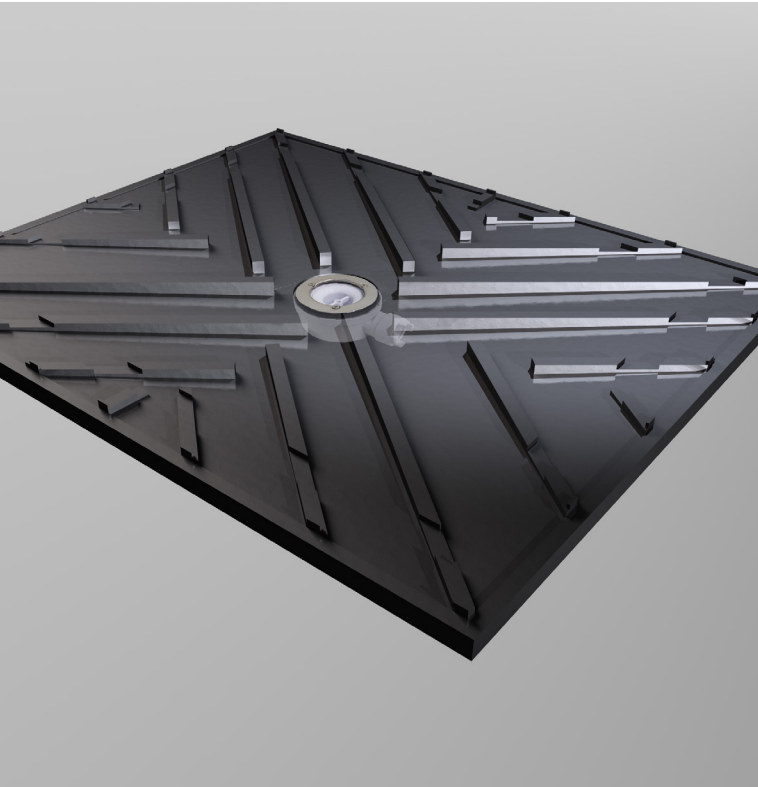
Protective piece in low density EPS, to avoid damage to the shower tray during the installation phase.



## 8. cleaning key

Tool made of 306 stainless steel, for facilitating lifting the tiles.





Reference	Description	Sizes
544015941	LEVEL SHOWER TRAY 60×100	60 x 100 cm
544015200	LEVEL SHOWER TRAY 70×90	70 x 90 cm
544015958	LEVEL SHOWER TRAY 70×100	70 x 100 cm
544015965	LEVEL SHOWER TRAY 70×120	70 x 120 cm
544015156	LEVEL SHOWER TRAY 80×90	80 x 90 cm
544015224	LEVEL SHOWER TRAY 80×100	80 x 100 cm
544015231	LEVEL SHOWER TRAY 80×120	80 x 120 cm
544015972	LEVEL SHOWER TRAY 80×140	80 x 140 cm
544015248	LEVEL SHOWER TRAY 90×90	90 x 90 cm
544015255	LEVEL SHOWER TRAY 90×100	90 x 100 cm
544015194	LEVEL SHOWER TRAY 90×120	90 x 120 cm
544015989	LEVEL SHOWER TRAY 90×140	90 x 140 cm
544015309	LEVEL SHOWER TRAY 100×100	100 x 100 cm
544015316	LEVEL SHOWER TRAY 100×120	100 x 120 cm
544015996	LEVEL SHOWER TRAY 100×140	100 x 140 cm

Ceramic-integrated shower tray, with drain (1) with water trap (convertible into straight drain).  
Included: waterproofing perimeter band (2), trim piece for the walls (3), tiling frames (4), adhesive REVESTECHEFLEX (5), protector in installation (6) and cleaning key (7).



**Custom manufacturing on request**  
Custom level fromer from 60 cm to 140 cm width and from 90 cm to 200 cm length



# TECHNICAL DATA\_DRY50 WATERPROOFING MEMBRANE

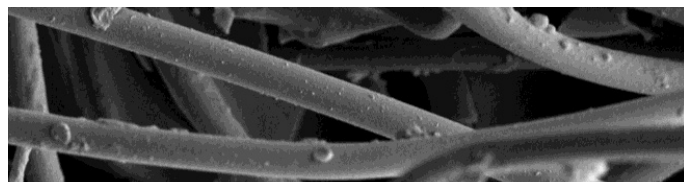
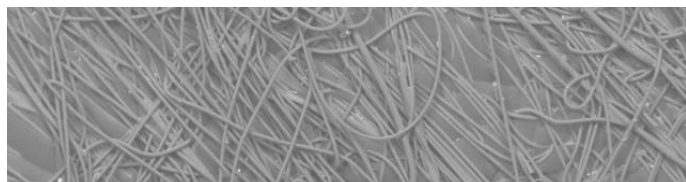
Flexible membrane for waterproofing walk-in shower trays, walls and floors that is adhered with a thin layer of tile adhesive. Our **DRY50** membrane is 100% waterproof and solves humidity problems that occur in other types of less reliable applications, such as rubber paint or waterproof cement.

Each of our walk-in shower waterproofing kits has **DRY50** membrane heat sealed to the drain, to ensure watertightness at the most critical point. In addition to the membrane included in the kit, we have different sizes of **DRY50** membrane presented in rolls, the references of which are shown on the following page, in complementary products.

DRY50 membrane	Test Method	Unit	Tolerance	Value
Length	EN 1848-2	m	MDV: -0% and +5%	1,20/1,50/2,0/2,50 m
Width	EN 1848-2	m	MDV: -0,5% and +1%	1,20 / 1,50 m
Weight	EN 1849-2	g/m²	MDV: -5% and +10%	335
Specific weigth	EN 1849-2	mm	MDV: -5% and +10%	0,52
Water tightness	EN 1928 Meth. B	10 KPa		PASS
Water resistance of overlap cementitious adhesive C2	Water column	1m/24h		WATERTIGHT
Resistance to diffusion water vapour	UNE-EN 1931:2001	m²·h·Pa/mg		9,75
Effects of chemicals	EN 1847	Values do not change after 28 days in saturated calcium hydroxide solution at 23°C		
Composition	Waterproofing membrane: Thermoplastic Polyolefins / Coating: Non-woven Polyester Fibers			
Waterproofing membrane complies with EN 13956:2012 CE marked				

## Resistance to alkalis

At Revestech we use state-of-the-art raw materials. Our membranes are totally resistant to the alkaline medium produced by the tile adhesive used in their installation; not suffering any degradation with the passage of time and thus ensuring perfect watertightness.



## greater grip on supports and materials

The tensile tests carried out at the CSTB laboratories demonstrate that the polyester fibres of the REVESTTECH membranes have a four times greater grip on the surface than polypropylene fibres, which are also used for the manufacture of polyolefin membranes.

CSTB	Method	Unit	Tolerance	Value
Adhesion of adhesive cementitious C2 on the membrane sheet: TENSILE	Methodology CSTB	N/mm <sup>2</sup>	±10%	0,9
Adhesion of adhesive cementitious C2 on the membrane sheet: SHEAR STRESS	Methodology CSTB	N/mm <sup>2</sup>	± 5%	1,28
Impact strenght with ceramic coating	Methodology CSTB	Number of shocks		4

## GreenBuilding commitment



Committed to sustainable construction, at Revestech we work so that all of our products comply with the GREENBUILDING philosophy; thus avoiding environmental impact and ensuring a healthy environment. REVESTTECH membranes are 100% recyclable without prejudice to the environment where the recycling activity is generated. They are also anti-bacterial and anti-mould, favouring completely dry environments to avoid the proliferation of microorganisms.

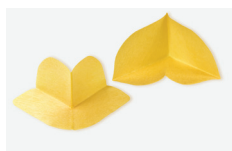


## COMPLEMENTARY PRODUCTS FOR LEVEL SHOWER TRAY KIT



Waterproofing membrane

reference	description	presentation
544010090	DRY50 30	Roll of 1,2 x 30 m (36m <sup>2</sup> )
544010076	DRY50 5	Roll of 1,2 x 5 m (6m <sup>2</sup> )
544010106	DRY50 450	Roll of 1,5 x 30 m (45m <sup>2</sup> )
544010083	DRY50 75	Roll of 1,5 x 5 m (7,5m <sup>2</sup> )



Waterproof reinforcement for corners

reference	description	presentation
544010793	DRY50 CORNERIN	2 pcs. per bag
544010809	DRY50 CORNEROUT	2 pcs. per bag



Waterproofing strip for joints

reference	description	presentation
544010113	DRY50 BAND 13X30	Roll of 30 m x 12,7 cm
544010120	DRY50 BAND 13X5	Roll of 5 m x 12,7 cm
544010144	DRY50 BAND 30X30	Roll of 30 m x 30 cm
544010137	DRY50 BAND 30X5	Roll of 5 m x 30 cm



Waterproof backing for pipes

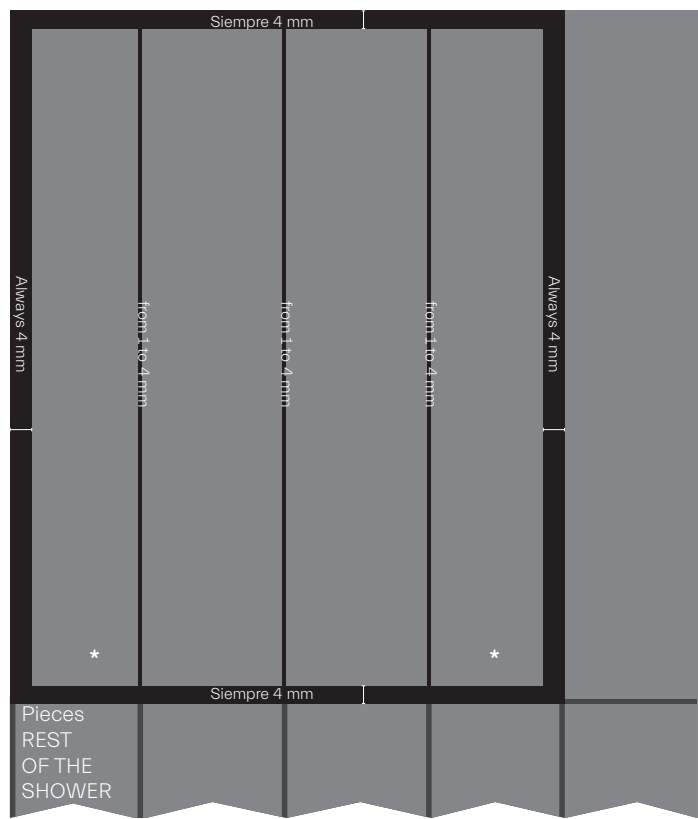
reference	description	presentation
544010816	DRY TUB 20	2 pcs. per bag





SEAL TREATMENT

The diagram below shows an **overhead view of the seals on the level shower tray.**



A\_Various tiles

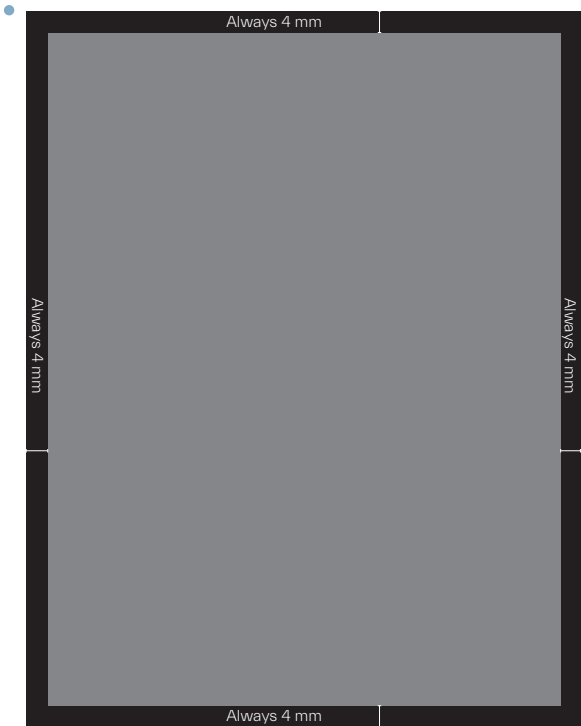
SEALS ON THE LEVEL TRAY

Perimeter seals:

Remember that the perimeter of the tiles on the level shower tray **should always have a 4 mm seal** on all 4 sides.

Seals between tiles:

Except for the case in which there is a single tile, the seals between tiles should be **1 to 4 mm**.  
\* If using the same tiling throughout the bathroom, the tiles at the end of the level shower tray should be cut lengthwise to make all the seals match (see diagram).



B\_Single tile

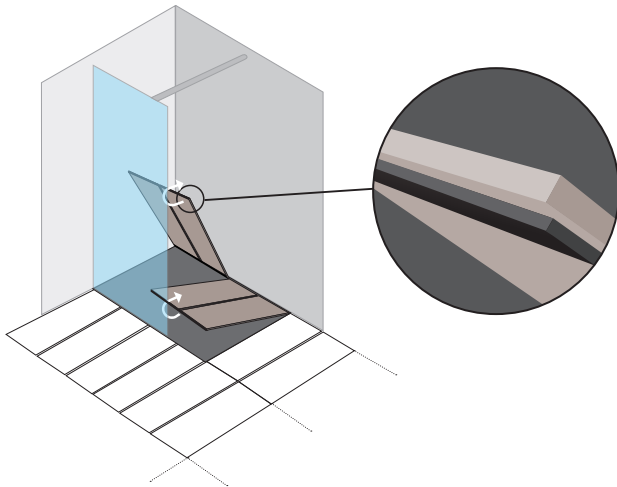
Perimeter seal:

The perimeter of the single tile of the level shower tray should **always have a 4 mm seal**.

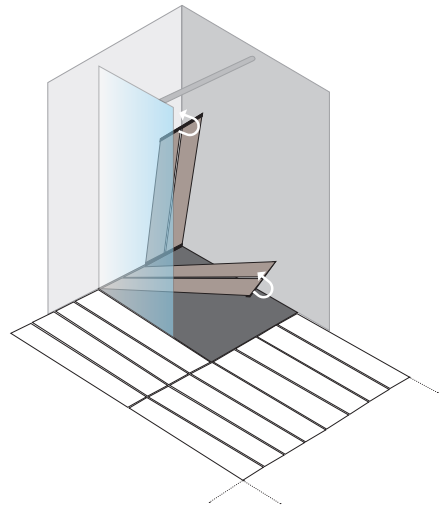
# RAISED DECKING

## LIFTING THE CERAMIC TILING

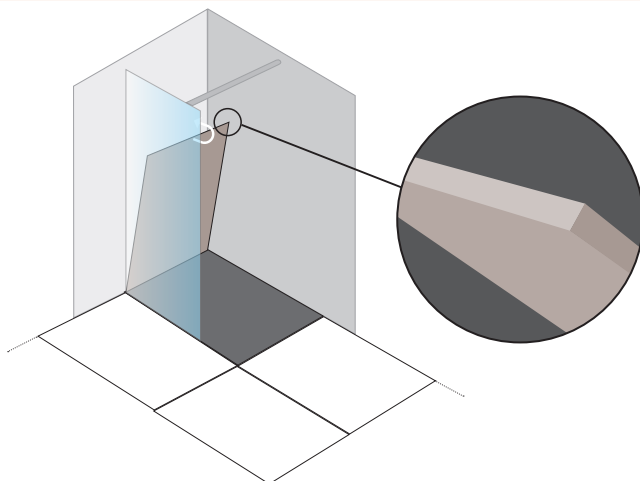
A\_VARIOUS TILES\_HORIZONTAL layout



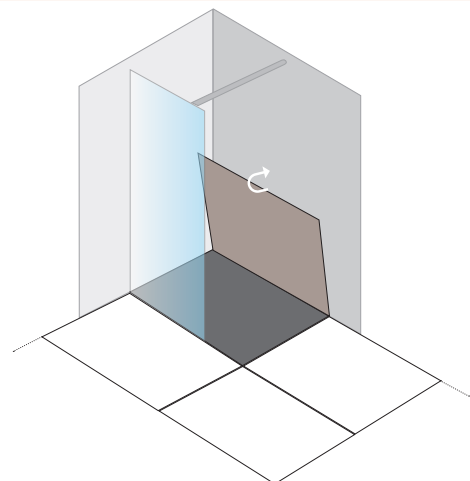
B\_VARIOUS TILES\_VERTICAL layout



C\_SINGLE TILE\_HORIZONTAL layout



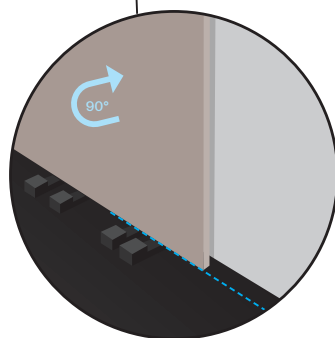
D\_SINGLE TILE\_VERTICAL layout



### IMPORTANT

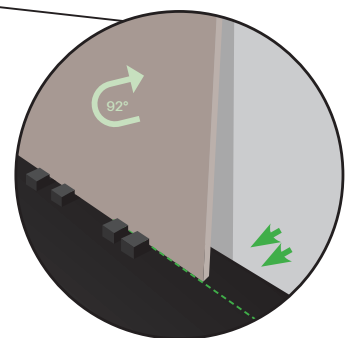
#### 1. SUPPORT POSITION.

Having raised the decking with the aid of the key, remove the key and support it against the wall **TURNING it 90°**.



#### 2. SAFETY POSITION.

Immediately push the lower part of the decking until reaching safety position, thereby supported by the stoppers projecting from the tray (green line). **TURNING it 92°**.



## LAYING THE TILES ON THE SHOWER TRAY

Given the weight of the tiling, for easy elevation when cleaning the level shower tray, you must make one or more tracks, depending on the **measurement of the level tray** and the **size and layout of the tiles to be laid**.

The tracks are made by laying out the tiles on the level shower tray. Always taking the seals into account, cut the frames into one or more sections, leaving the floor of the tray divided into two or more tracks.

- Depending on **the tile size** make one or more tracks (**photos 1, 2 and 3**).

- Depending on **the tile layout**, the number of tracks may also vary (**photos 4 and 5**).

depending on the **tile size** \_\_\_\_\_

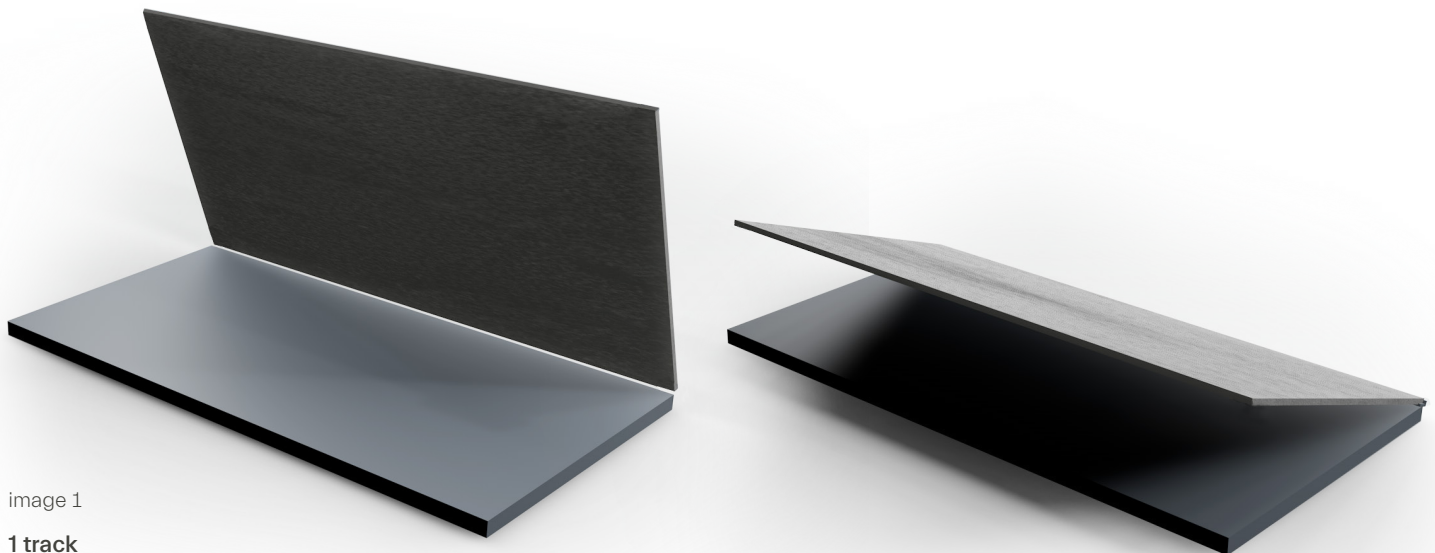


image 1

**1 track**

1 ceramic tile

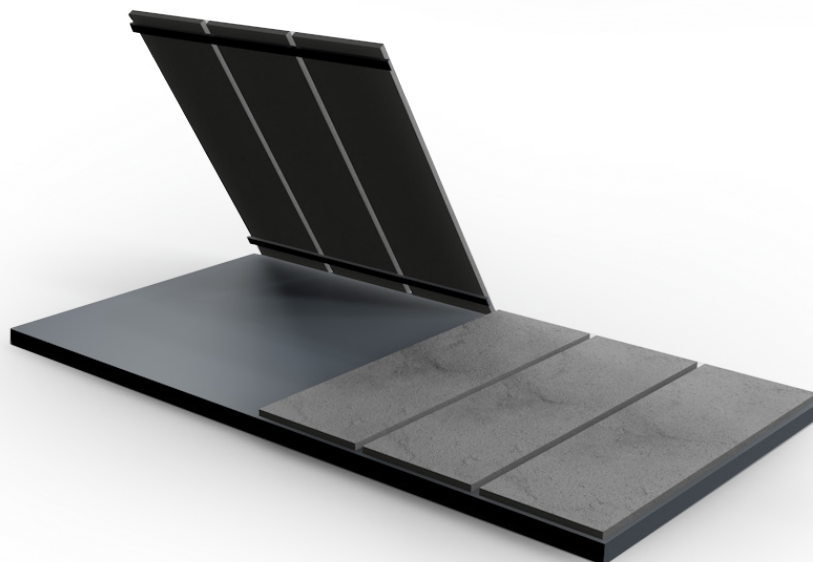


image 2

**2 tracks**

6 ceramic tiles



image 3

**3 tracks**  
12 ceramic tiles

depending on the **tile layout**

---



image 4

**2 tracks**  
4 ceramic tiles



image 5

**3 tracks**  
6 ceramic tiles

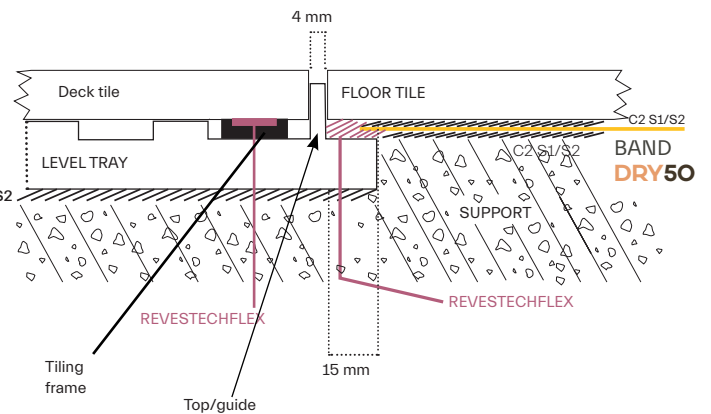
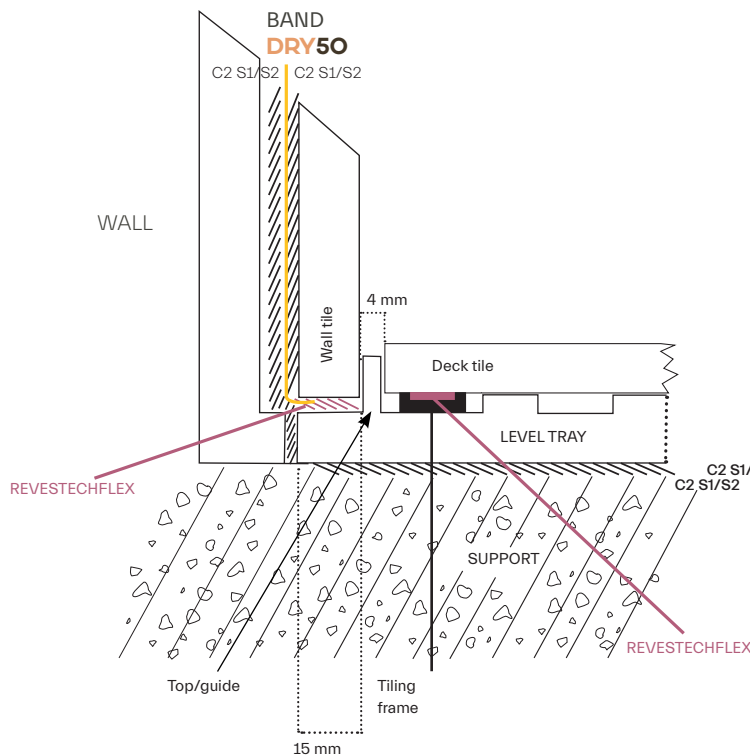


# JOINTS

## SHOWER FLOOR JOINTS

Detail of the joint at the edge of the level tray with the **WALL** tiling.

Detail of the joint at the edge of the level tray with the tiling of the **REST OF THE SHOWER**.



### OPTIONAL: trim piece.

If, for installation, you do not want to support the tiles directly on the level tray, place the trim piece onto the flat part of the tray border.

